

Ruby recess mounted range of LED ceiling light are a perfect fit for varied Indoor lighting applications. The die cast aluminium housing is ideal for better thermal management. High lumen output & CCT options make this versatile for superior glare free indoor lighting solutions.

Product Description

- LED Ceiling recessed mounted tiltable downlight - Indoor luminaire for varied applications.
- Luminaire made of die-cast aluminium which has excellent mechanical strength, aluminium heat sink for better thermal management.
- Adopting reflector which is with excellent optics effect and excellent spot light effect.
- The lamp can be positioned at various angles for the directional light throw.
- High PF constant current LED driver.
- Cable entries for through-wiring of mains supply cable.
- Suitable for operation on 240V, 50Hz single phase ac supply.
- Ordering guide : KL-3296-CCT (Colour Temperature)
- Available CCT : 3000K, 4000K, 5700K.



Product Benefits

- Attractive high quality housing and optics.
- Visual comfort with maximum energy saving
- Sturdy construction in order to maintain performance of the luminaire at reduced maintenance cost.
- Quick & simple installation.
- Flexible deployment options with a wide spectrum of applications.

Area of Application

Lobbies & Foyers, Retail Sector, Corridors, Corporate, Residential & Educational premises, Hospitality Industry, Commercial & Business Centers, etc.

Available Finish

White epoxy polyester powder coating.





Technical Specifications

General

ID	: 3296
System Wattage	: 8W LED
COD	: Ø55
Driver Integrated	: Constant Current
Input Voltage	: 230-240Vac
Frequency	: 50-60Hz
Operating Voltage	: 100-277Vac
Operating Temperature	: -15°C~+50°C

Physical

Body	: Die-Cast Aluminium
Diffuser	: Translucent Acrylic
Mounting	: Ceiling recess / Tiltable
Finish	: White polyester powder coating

Light Source

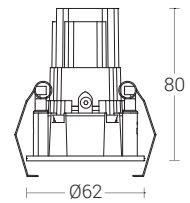
Light Source	: CREE
CRI (Ra)	: >80
LED Colour Temperature	: 3000K / 4000K / 5700K

Driver

Power Supply	: Integrated
Power Factor	: >0.9
THD	: <10%
Surge Protection	: 3KV
Efficiency	: >85%
Dimming Option	: Triac / 1-10V / Dali

Optical Performance

Beam Angle	: 30°
------------	-------



Light Distribution

