

Elegant lighting design, which is suitable for both modern and classic architecture. Ideal for creating visual guidance and exceptional visual comfort. These luminaires offer shielded glare free illumination of ground surface and are perfect for illuminating entrances, footpaths as well as garden and landscape architecture. Bollard luminaires contribute to safety by illuminating pathways and other open spaces.

Product Description

- Luminaire made of extruded aluminium alloy (grade 6063) with die-cast aluminium components and non corrosive SS fasteners.
- Clear toughened glass.
- Luminaire can be aligned on the mounting plate around 360°.
- Mounting plate die cast aluminium double powder coat with an anchorage unit and stainless steel fixing screws.
- Cable entries for through-wiring of mains supply cable
- Integral constant current power supply
- CRI (Ra) : ≥ 80
- Prewired with LED driver and suitable for operating on 240V, 50Hz single phase ac supply.
- Ordering guide : KL-4709-CCT (Colour Temperature)
- Available CCT : 2700K, 4000K, 6500K



Product Benefits

- High luminous efficiency at reduced wattage.
- Elegant, Robust design
- Corrosion resistant and Maintenance free.
- Dark sky compliant protects pedestrians from glare, in addition to preventing spill light above the horizontal plane.
- Sustainable LED technology offers durability and optimal light output with low power consumption.

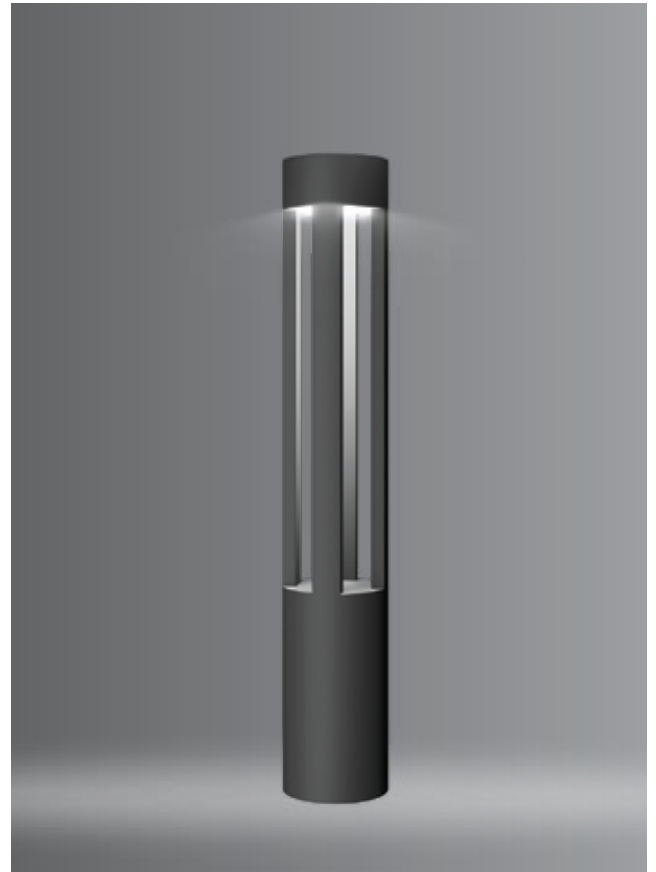
Area of Application

Suitable for Residential & Public areas for Illuminating Driveways, Pathways, Flowerbeds, Entrances, Squares, Gardens and as well as landscape architecture.

Available Finish

Pure polyester powder coated

- Graphite grey
- Anthracite grey
- Jet black





Technical Specifications

General

ID : 4709
 System Wattage : 12W LED
 Driver Integral : Constant Current
 Input Voltage : 230-240Vac
 Frequency : 50-60 Hz
 Operating Voltage : 100-277Vac
 Operating Temperature : -15°C~+50°C

Light Source

Light Source : CITIZEN
 LED Lumens : 1800 lm
 CRI (Ra) : >80
 LED Colour Temperature : 2700K / 4000K / 6500K

Driver

Power Supply : Integral
 Power Factor : >0.9
 THD : <10%
 Surge Protection : 2.5KV
 Efficiency : >85%

Physical

Body : Extruded Aluminium with Die-Cast Aluminium Base
 Diffuser : Clear Toughened Glass
 Mounting : Surface - Floor
 Finish : Powder Coated Graphite Grey / Jet Black Anthracite Grey

Optical Performance

Light Distribution : Symmetrical

