

Our IP67 profiles are modular and offers an innovative lighting solution in constrained space which require linear lighting. The profiles are made of extruded anodised aluminium finish. The aluminium profile and the translucent polyurethane encapsulation lends to IP67 protection class. Various mounting options are available making it a versatile product for various applications.

### Product Features

- Luminaire made of extruded aluminium (grade 6063) for better thermal management.
- Translucent polyurethane encapsulation.
- Suitable for surface mounting.
- IP67 connector on both sides and can be easily installed via adjustable wall clamps.
- Constant voltage LED driver 24Vdc Non integral (to be ordered with suitable power supply).
- Multiple lengths available.
- Available CCT : 2700K, 3000K, 4000K (Special colours on request)



### Product Benefits

- Attractive high quality robust housing.
- Sturdy construction in order to maintain performance of the luminaire.
- Quick & simple installation.
- Flexible deployment options with a wide spectrum of applications.

### Area of Application

Hotel & Resorts, Staircase Lighting, Malls, Restaurants, Receptions, Shopping Complex, Commercial & Business Centers, Residential Lighting and similar applications.

### Available Finish

Anodised Aluminium



# K-LITE

## Form-16

Power : 5W 10W 15W 20W  
Length : 500mm 1000mm 1500mm 2000mm

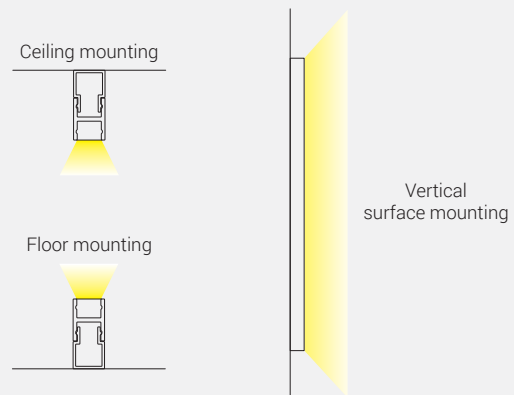
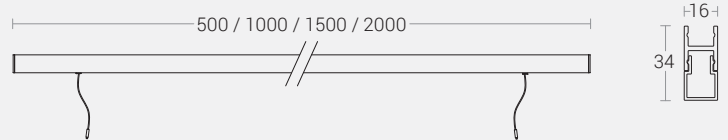
### Features

- CRI Ra>90
- SDCM  $\leq 3$
- L80 / B10 @ 60,000 Hrs
- For ready use with IP67 connectors
- Mounting tray for better cable management with slide fit system.

### Options



### Dimension in mm

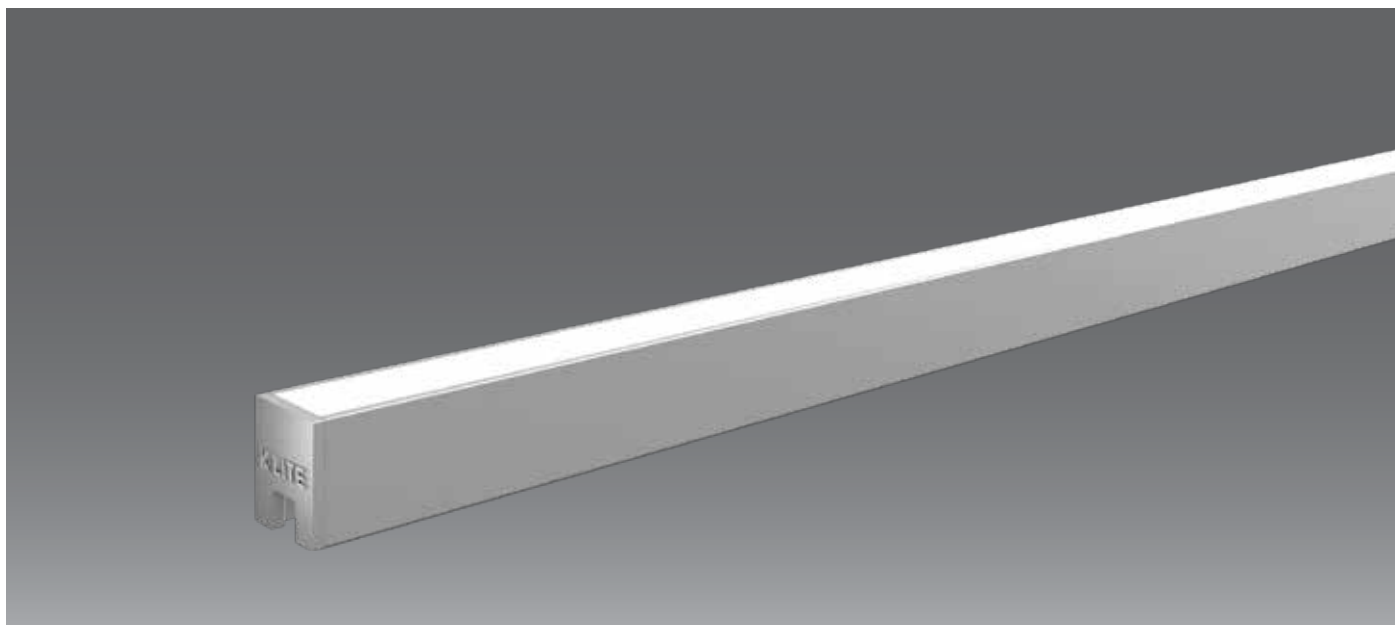


### Housing Colour

- High-quality Anodised Aluminium



Light Distribution refer online



### Technical Specifications

#### Light Source

Light Source	: LED
CRI (Ra)	: >90
LED Colour Temperature	: 2700K / 3000K / 4000K (Special colours on request)

#### General

Driver	: Constant Voltage
Operating Temperature	: -15°C~+50°C
Operating Voltage	: 24Vdc
Power Supply	: Non Integral 24V PSU (IP67)

#### Optical

Tilt	: Fixed
Optical Beam Angle	: 120° (Diffused)
Diffuser Material	: Translucent Polyurethane Encapsulation

#### Physical

Body	: Extruded Aluminium
Mounting	: Surface
Finish	: Anodized Aluminium (Other colours on request)

#### Specification

Power (W/m)	10W/m
Max.length (m)	2 mts
Max.serial run length (m)	5 mts
Max.ambient temp.(Ta <sub>max</sub> )	50°C



### Ordering Guide

#### Surface - Direct

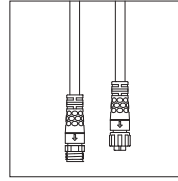
ID	Wattage	Dimension (mm)
23247	5W	500 x 16 x 34
23247	10W	1000 x 16 x 34
23247	15W	1500 x 16 x 34
23247	20W	2000 x 16 x 34



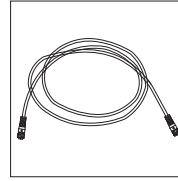
# K-LITE

## Cabling Accessories

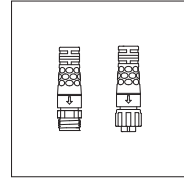
### Cabling Accessories



Leader Cable



Jumper Cable



End cap Male / Female

ID	Description	Dimension (mm)
68319	End cap Male / Female - 2 pin	-
68320/68321	Leader Cable Male / Female - 2 pin	0.5m Cable
68322	Jumper Cable - 2 pin	1m Cable
68383	End cap Male / Female - 5 pin	-
68384/68385	Leader Cable Male/Female - 5 pin	0.5m Cable
68386	Jumper Cable - 5 pin	1m Cable

\* Fixture manufactured to desired length with factory IP66 tested (not field cuttable)

- The given data are standard values. Due to tolerances of the manufacturing process and the electrical components, photometric values and electrical power can vary up to 10 - 12%.
- Luminous flux upto -40% with opal transmission.
- In IP67 encapsulated products, tolerance in colour temperature can occur.
- Transparent end caps also available (Power Grazer).
- Light distribution refer online