

K-LITE

LEVO WIDE-R

Power : Upto 40W Upto 80W
Length : 1210mm 2402 mm

Upto
100
lm/w

Features

- Bridgelux / Equivalent LED's
- CRI Ra>80 (>90 On Request)
- SDCM ≤ 3
- L70 / B10 @ 60,000 Hrs



Options

- CCT : 3000K / 4000K / 5700K
- Driver options

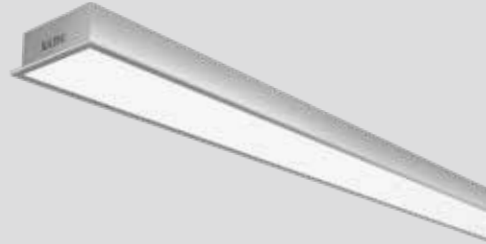


Beam Angle

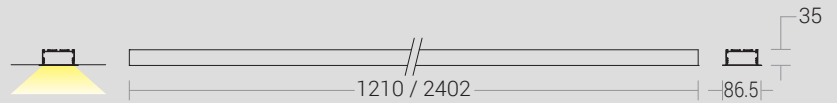


Diffused

RECESS



Dimension
in mm



Housing Colour



Extruded aluminium with powder coated finish in
RAL9016 White fine texture | RAL9006 Grey fine texture



Open Source

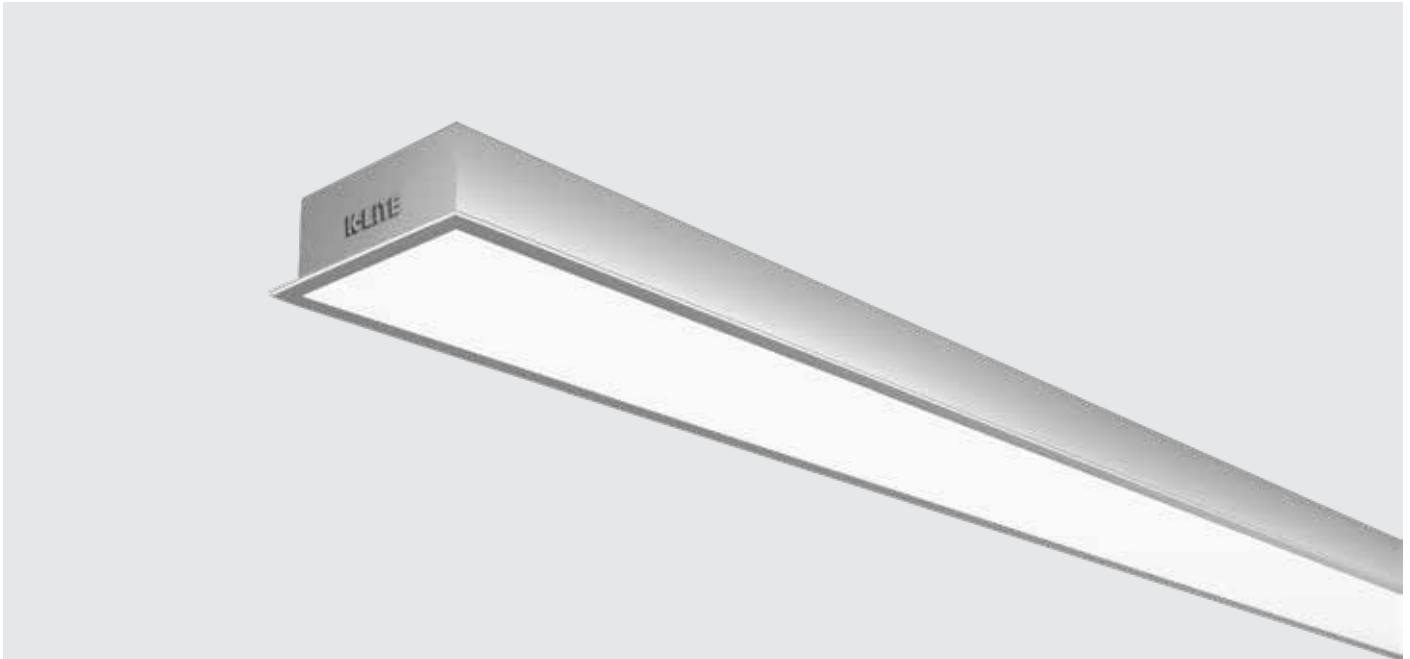
Light Distribution refer online



Prismatic



PC Opal Matte



Technical Specifications

General

Driver	: Constant Current
Input Voltage	: 198-264Vac
Frequency	: 50-60Hz
Operating Temperature	: -15°C~+50°C

Physical

Body	: Extruded Aluminium Profile
Mounting	: Recess
Finish	: White(RAL9016) Grey (RAL 9006)

Light Source

Light Source	: Bridgelux / Equivalent
LED Lumens	: 6000 lm / 12000 lm
CRI (Ra)	: >80 (>90 On Request)
LED Colour Temperature	: 3000K / 4000K / 5700K

Driver

Power Supply	: Integrated
Power Factor	: >0.90
THD	: <10%
Surge Protection	: 3KV / 4KV
Efficiency	: >85%

Optical

Tilt	: Fixed
Beam Angle	: 115°
Diffuser Material	: PC Opal Matte / Prismatic Diffuser
UGR	: <21



Ordering Guide

Recess - Opal Matte

ID	Wattage	C.O.D	Dimension (mm)
2856	Upto 40W	1199 x 73	1210 x 86 x 35
2857	Upto 80W	2394 x 73	2402 x 86 x 35

Recess - Prismatic

ID	Wattage	C.O.D	Dimension (mm)
2840	Upto 40W	1199 x 73	1210 x 86 x 35
2841	Upto 80W	2394 x 73	2402 x 86 x 35