

The Bulk head are the perfect combination of aesthetic fixture design and optimum illumination performance. Surface mounting wall light for illumination of interior and exterior locations where guidance and security lighting is required.

Product Description

- Luminaire made of die cast aluminium with non corrosive SS fasteners.
- Non yellowing UV stabilized translucent polycarbonate diffuser for glare free, uniform light distribution.
- Silicone gasket.
- Luminaire integrated with 12W LED.
- Cable entries for through-wiring of mains supply cable.
- Integral constant current power supply.
- CRI (Ra) : ≥ 80 .
- Prewired with LED driver and suitable for operating on 240V, 50Hz single phase ac supply.
- Ordering guide : KL-4075-CCT (Colour Temperature).
- Available CCT : 3000K, 4000K, 5700K.



Product Benefits

- High luminous efficiency at reduced wattage.
- Versatile use, Simple installation.
- Sustainable LED technology offers durability and optimal light output with low power consumption.

Area of Application

Suitable for Private & Public areas, Commercial centres, Walkways, Residential, Passages.

Available Finish

Pure polyester powder coated black





Technical Specifications

General

ID	: 4075
System Wattage	: 12W LED
Driver Integral	: Constant Current
Input Voltage	: 230-240Vac
Frequency	: 50-60Hz
Operating Voltage	: 100-277Vac
Operating Temperature	: -15°C~+50°C

Physical

Body	: Die Cast Aluminium
Diffuser	: Translucent polycarbonate
Mounting	: Wall - Surface
Finish	: Powder Coated Black

Light Source

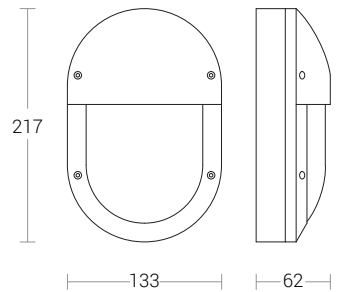
Light Source	: NICHIA
LED Lumens	: 1140 lm
CRI (Ra)	: >80
LED Colour Temperature	: 3000K / 4000K / 5700K

Driver

Power Supply	: Integral
Power Factor	: >0.9
THD	: <10%
Surge Protection	: 2.5KV
Efficiency	: >85%

Optical Performance

Colour Temperature	: 3000K / 4000K / 5700K
Luminous flux	: 617 / 539 / 622 lm
Beam Angle	: 120°



Photometric Data

