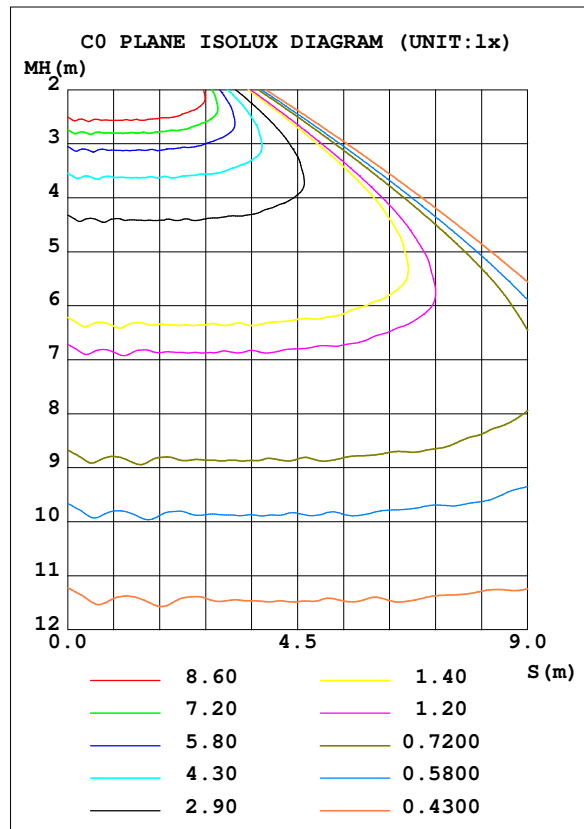
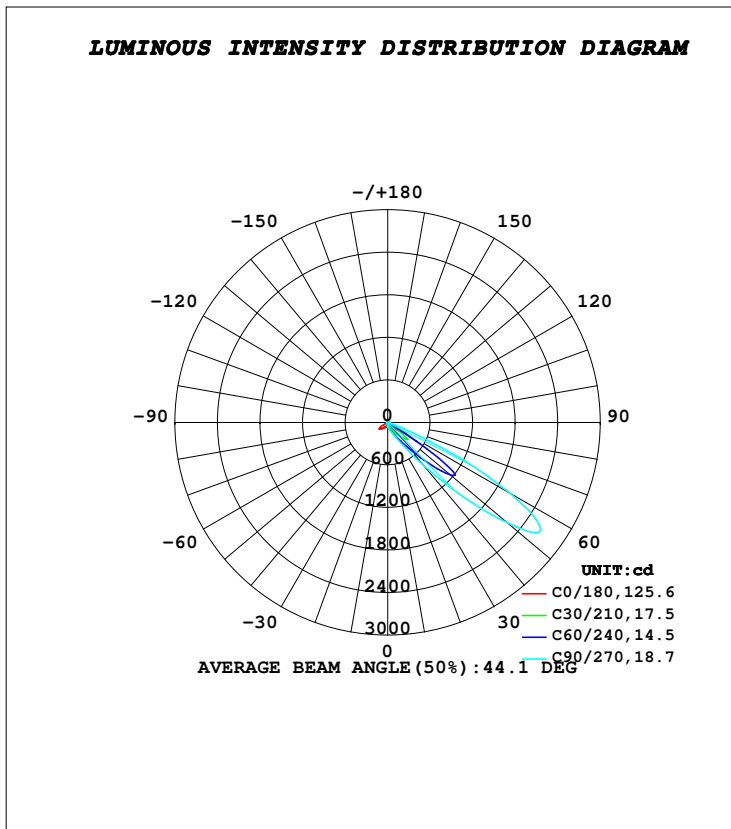


LUMINAIRE PHOTOMETRIC TEST REPORT

Test:U:230.14V I:0.0540A P:11.941W PF:0.9617 Freq:50.00Hz Lamp Flux:1484.54x1 lm		
NAME: RADO-X	TYPE:WALL LUMINAIRES	WEIGHT:1.390 Kg
SPEC.:3000K, CITI 1, TYPE A, CRI 80	DIM.: 294 x 124 x 100	SERIAL No.:INT/2024/07/71
MFR.: K-LITE	SUR.:	Shielding Angle:

DATA OF LAMP		PHOTOMETRIC DATA			
MODEL	KL-4465	Imax (cd)	2633	S/MH (C0/180)	2.36
NOMINAL POWER (W)	12	LOR (%)	56.3	S/MH (C90/270)	0.40
RATED VOLTAGE (V)	230	TOTAL FLUX (lm)	836.24	η UP, DN (C0-180)	0.0, 53.3
NOMINAL FLUX (lm)	1484.54	CIE CLASS	DIRECT	η UP, DN (C180-360)	0.0, 3.1
LAMPS INSIDE	1	η up (%)	0.0	CIBSE SHR NOM	0.00
TEST VOLTAGE (V)	230	η down (%)	56.3	CIBSE SHR MAX	1.00



C Range: 0 - 360DEG
C Interval: 10.0DEG
Test Speed: HIGH
Temperature: 25.4DEG
Operators: K-LITE
Test Date: 27 July 2024

γ Range: 0 - 180DEG
γ Interval: 1.0DEG
Test System: EVERFINE GO-R5000_V2 SYSTEM V2.00.417
Humidity: 38.7%
Test Distance: 2.001m [K=1.0000]
Remarks: