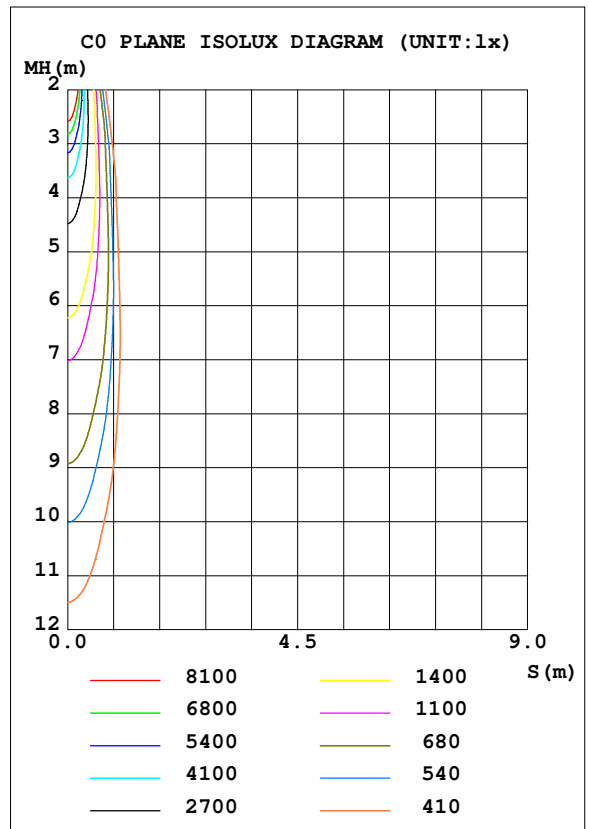
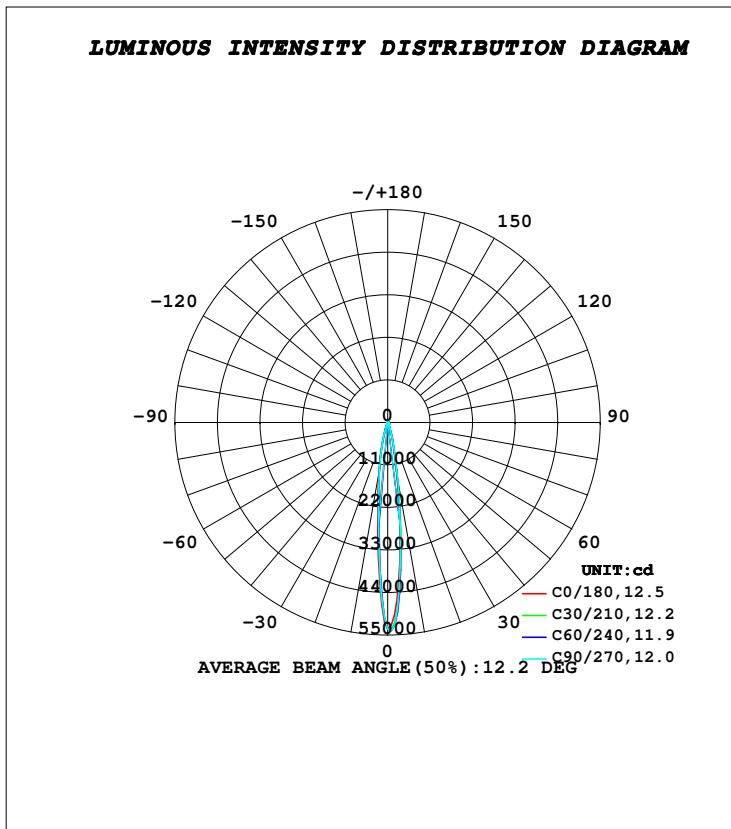


LUMINAIRE PHOTOMETRIC TEST REPORT

Test:U:230.46V I:0.2059A P:47.066W PF:0.9918 Freq:50.00Hz Lamp Flux:7221.58x1 lm		
NAME: VELA 2.0	TYPE:RECESSED CEILING	WEIGHT:1.670kg
SPEC.:5700K, NICHIA, BA-10°, 80 CRI	DIM.: Ø185 x 90	SERIAL No.:INT/2024/06/24A
MFR.: K-LITE	SUR.:	Shielding Angle:

DATA OF LAMP		PHOTOMETRIC DATA				Eff: 113.03 lm/W
MODEL	KL-4329	I _{max} (cd)	54129	S/MH (C0/180)	0.20	
NOMINAL POWER (W)	50	LOR (%)	73.7	S/MH (C90/270)	0.18	
RATED VOLTAGE (V)	230	TOTAL FLUX (lm)	5320.1	η UP, DN (C0-180)	0.0, 38.8	
NOMINAL FLUX (lm)	7221.58	CIE CLASS	DIRECT	η UP, DN (C180-360)	0.0, 34.9	
LAMPS INSIDE	1	η up (%)	0.0	CIBSE SHR NOM	0.00	
TEST VOLTAGE (V)	230	η down (%)	73.7	CIBSE SHR MAX	1.00	



C Range: 0 - 360DEG
C Interval: 10.0DEG
Test Speed: HIGH
Temperature: 26.0DEG
Operators:K-LITE
Test Date:15 June 2024

γ Range: 0 - 90DEG
γ Interval: 1.0DEG
Test System:EVERFINE GO-R5000_V2 SYSTEM V2.00.417
Humidity: 36.8%
Test Distance:1.997m [K=1.0000]
Remarks: