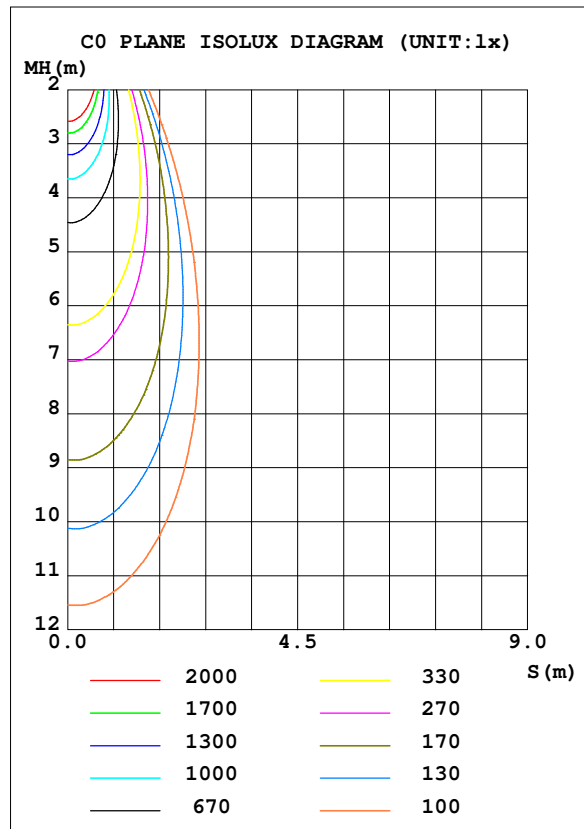
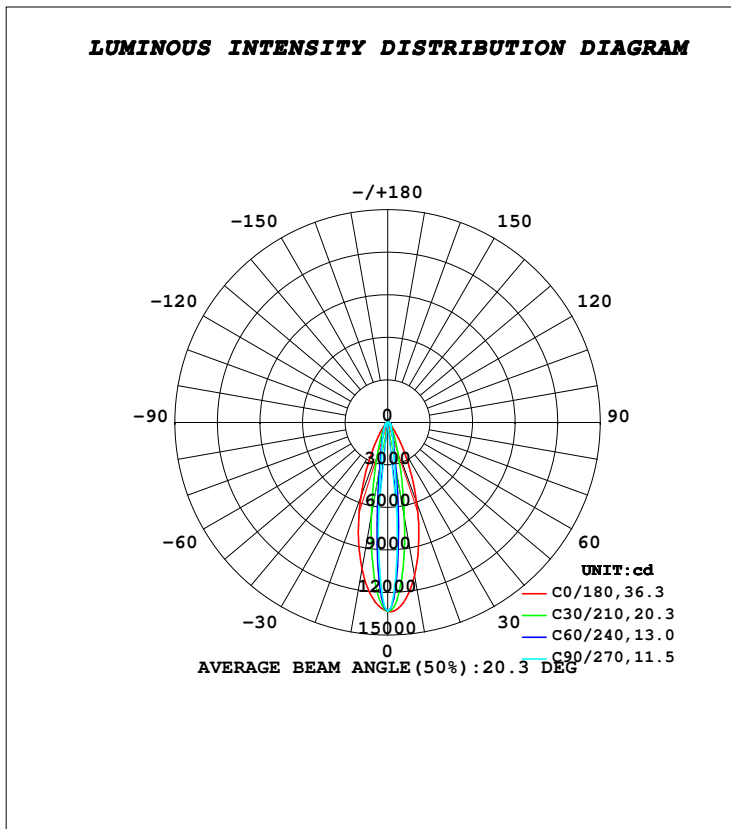


**LUMINAIRE PHOTOMETRIC TEST REPORT**

Test:U:230.55V I:0.3627A P:37.759W PF:0.4516 Freq:49.99Hz Lamp Flux:4153.49x1 lm		
NAME: LEVA-8	TYPE:LINEAR LIGHTING	WEIGHT:2.640kg
SPEC.:3000K, CREE, ASYMMETRICAL BEAM	DIM.: 446 x 70 x 118	SERIAL No.:INT/2024/04/08
MFR.: K-LITE	SUR.:	Shielding Angle:

DATA OF LAMP		PHOTOMETRIC DATA			
MODEL	KL-4320	Imax (cd)	13337	S/MH (C0/180)	0.58
NOMINAL POWER (W)	40	LOR (%)	77.3	S/MH (C90/270)	0.20
RATED VOLTAGE (V)	230	TOTAL FLUX (lm)	3211.2	$\eta$ UP, DN (C0-180)	0.0, 38.7
NOMINAL FLUX (lm)	4153.49	CIE CLASS	DIRECT	$\eta$ UP, DN (C180-360)	0.0, 38.7
LAMPS INSIDE	1	$\eta$ up (%)	0.0	CIBSE SHR NOM	0.00
TEST VOLTAGE (V)	230	$\eta$ down (%)	77.3	CIBSE SHR MAX	1.00



**C Range: 0 - 360DEG**  
**C Interval: 10.0DEG**  
**Test Speed: HIGH**  
**Temperature: 24.5DEG**  
**Operators: K-LITE**  
**Test Date: 04 April 2024**

**$\gamma$  Range: 0 - 90DEG**  
 **$\gamma$  Interval: 1.0DEG**  
**Test System: EVERFINE GO-R5000\_V2 SYSTEM V2.00.417**  
**Humidity: 45.6%**  
**Test Distance: 1.997m [K=1.0000]**  
**Remarks:**