

1 fo 1 : No. 13EESH
 DWG. No. : KP-DFD-K

ALL DIMENSIONS ARE IN MM

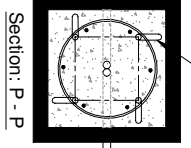
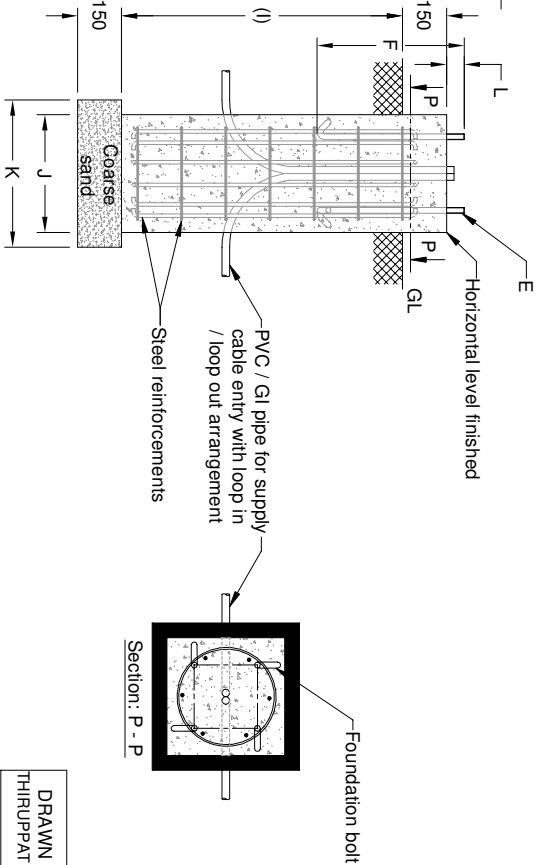
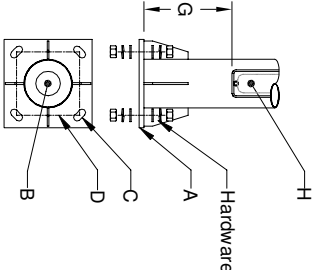
1 2 3 IF IN DOUBT ASK. DO NOT SCALE. 4 5 6

K - LITE STANDARD (S1) POLE FOUNDATION DETAILS

Figure	Pole height	Base plate (A)	Cable entry Hole(B)	No. of holes/ bolts (C)	CC (D)	Foundation bolt projection height (L)	Bolt (E)	Length (F)	Junction box from base plate (G)	Electrical Junction box (H)	RCC Height below GL / Digging depth (I)	Length of RCC layer (J)	Length of coarse sand layer (K)
KP-72.1	4000	□200 x 121hk	Ø70	4	140	75	M16	300	495	325 x 90	600	□400	□500
KP-72.2	5000	□250 x 121hk	Ø70	4	180	75	M16	500	495	325 x 90	800	□400	□500
KP-72.3	6000	□250 x 121hk	Ø70	4	180	75	M16	500	495	325 x 90	1000	□400	□500
KP-72.4	7000	□300 x 161hk	Ø70	4	215	90	M20	500	495	325 x 90	1000	□400	□500
KP-72.5	8000	□300 x 161hk	Ø70	4	215	90	M20	500	495	325 x 90	1200	□400	□500
KP-72.6	9000	□300 x 161hk	Ø70	4	215	90	M20	500	495	325 x 90	1200	□500	□600

Note :

1. Typical foundation drawing for standard soil condition.
2. Parameters considered in RCC foundation design :
 Load bearing capacity of soil (LBC) : 10 Ml/m² (Minimum)
 Basic wind speed : 50 m/s
 Grade of steel reinforcement : Fe 415
 Grade of foundation bolt : 4.6
3. Height of foundation above ground level (150mm) may be revised to suit the site conditions especially considering the expected water level stagnation.
4. Template supplied is suggested to be used for locating the CC of foundation bolts.
5. 4 Nos. of foundation bolt have to be oriented (located), while casting the foundation such that the door of the electrical junction box face the required direction.
6. PVC / GI pipe for entry of supply cable and the materials required for foundation are not scope of our supply.



DRAWN	CHECKED	APPROVED	DATE	SCALE	MATERIAL
THIRUPATHI			12-06-19	1 : 45	

REV. No.	REVISION DETAILS	DATE	REVISED	CHD	APPD
01	10m, 11m & 12m POLE HEIGHT REMOVED	06-07-2021	R.SATHISH		

DETAILED FOUNDATION DRAWING FOR KP - 72
 SURFACE MOUNTED POLE

K-LITE K-LITE INDUSTRIES
 CHENNAI-600 058

DRG. NO.	REV	SHEET
KP-DFD-112	01	1 of 1

A

B

C

D

A

B

C

D