

DWG. No. : KL-DFD-090  
SHEET No. : 1 of 1

ALL DIMENSIONS ARE IN mm

F

E

D

C

B

A

F

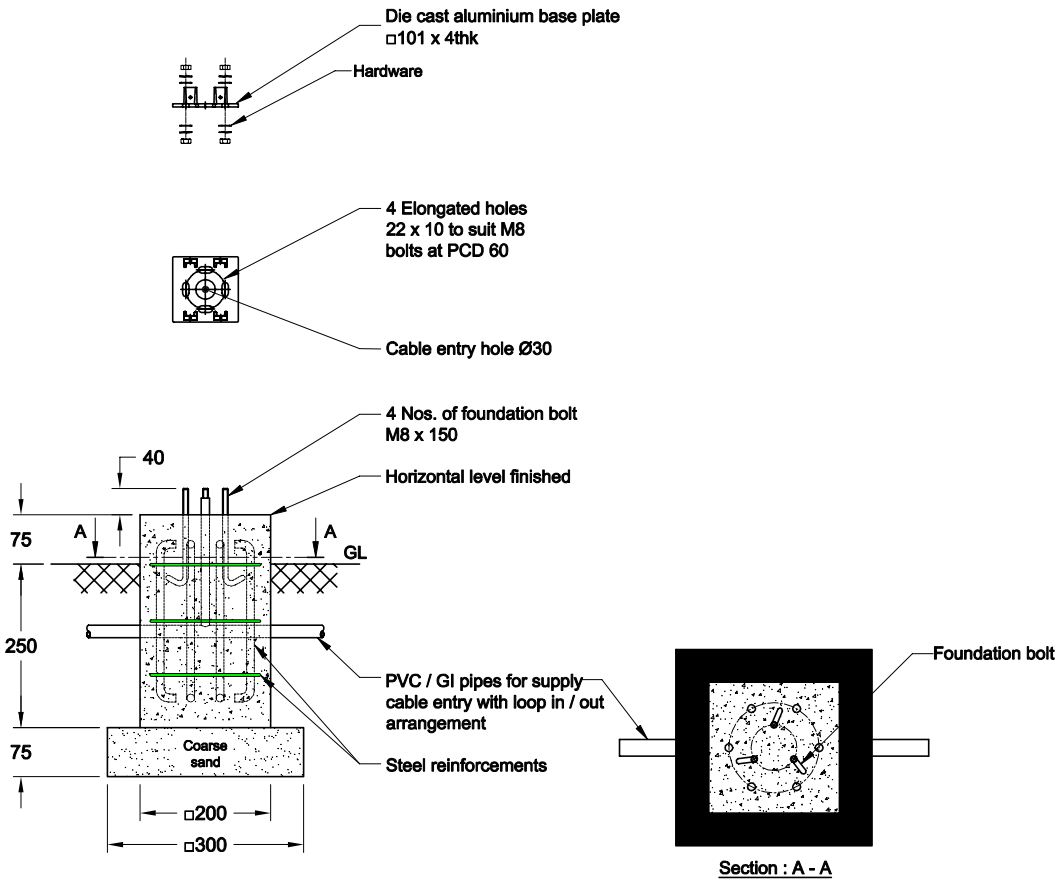
E

D

C

B

A



**Note**

1. Typical foundation drawing for standard soil condition.
2. Parameters considered in RCC foundation design :  
 Load bearing capacity of soil (LBC) : 10 Mt/m<sup>2</sup> (Minimum)  
 Basic wind speed : 50 m/s  
 Grade of steel reinforcement : Fe 415  
 Grade of foundation bolt : 4.6
3. Height of foundation above ground level (75mm) may be revised to suit the site conditions especially considering the expected water level stagnation.
4. Template supplied is suggested to be used for locating the PCD of foundation bolts.
5. 2 Nos. of foundation bolts have to be oriented (located), while casting the foundation such that the door of the electrical junction box face the required direction.
6. PVC / GI pipes for entry of supply cable and the materials required for foundation are not scope of our supply.

01	BASE PLATE DESIGN CHANGED	09-09-20	ABISHEK		
REV. No.	REVISION DETAILS	DATE	REVISED	CHD	APPD

DRAWN THIRUPPATHI	CHECKED	APPROVED	DATE 12-06-19	SCALE 1 : 12	MATERIAL	Z:\K - LITE\006.FOUNDATION DETAILS\KL - DFD - 090 (M37)\KL - DFD - 090 (M37),REV 01.dwg
----------------------	---------	----------	------------------	-----------------	----------	---

	<b>K-LITE INDUSTRIES</b> CHENNAI-600 058	DETAILED FOUNDATION DRAWING FOR M37 100 x 4.5 (FOUNDATION BOLT M8 x 150)			
			DRG. NO. <b>KL-DFD-090</b>	REV 01	SHEET 1 of 1